

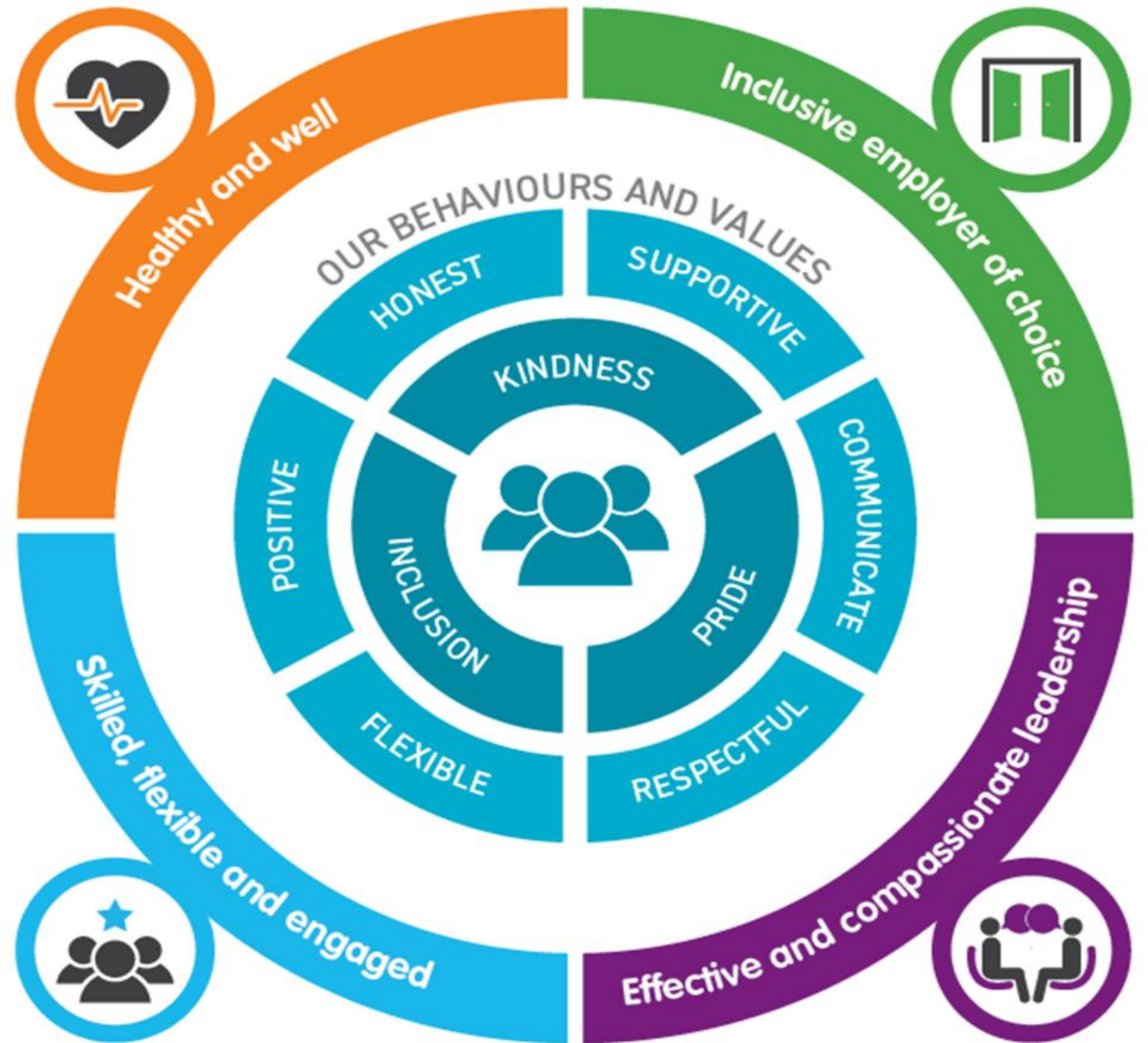
# Our Vision

---

*We will achieve our shared outcomes through people with the right skills, values and behaviours working in partnership in our places*

# Our People Strategy

---



# Our Pledges

---



## Inclusive employer of choice

Our recruitment and selection processes are inclusive, safe, fair and straightforward.

You'll get a warm welcome whether you're new or moving jobs.

You'll know you are valued and are comfortable and confident being yourself.



## Effective and compassionate leadership

Our leaders and managers are skilled and compassionate in their approach.

You'll know how to be the best you can be and how you're doing.



## Skilled, flexible and engaged

There are opportunities to learn and develop that suit you and your job of today and tomorrow.

Wherever possible, we take a flexible first approach to when, how and where you work.

You'll know what's going on and we'll listen to what's important to you and how you're feeling.



## Healthy and well

Your wellbeing is as important to us as it is to you.

Employee benefits support you as an individual.